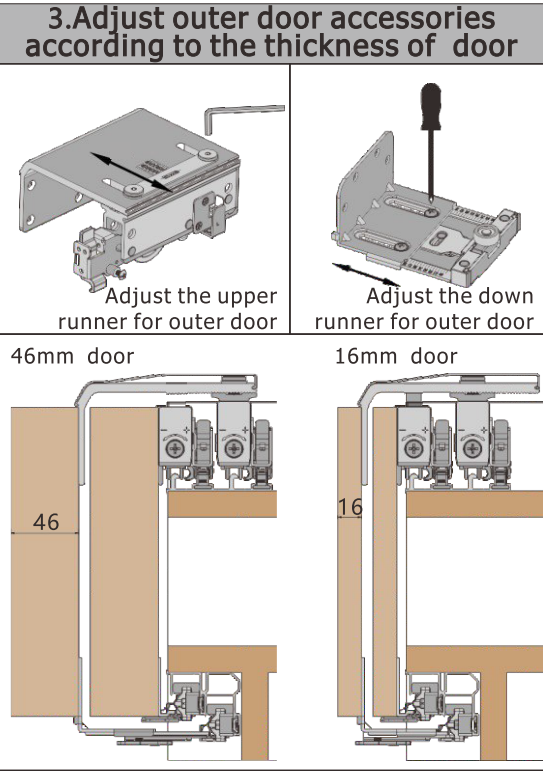
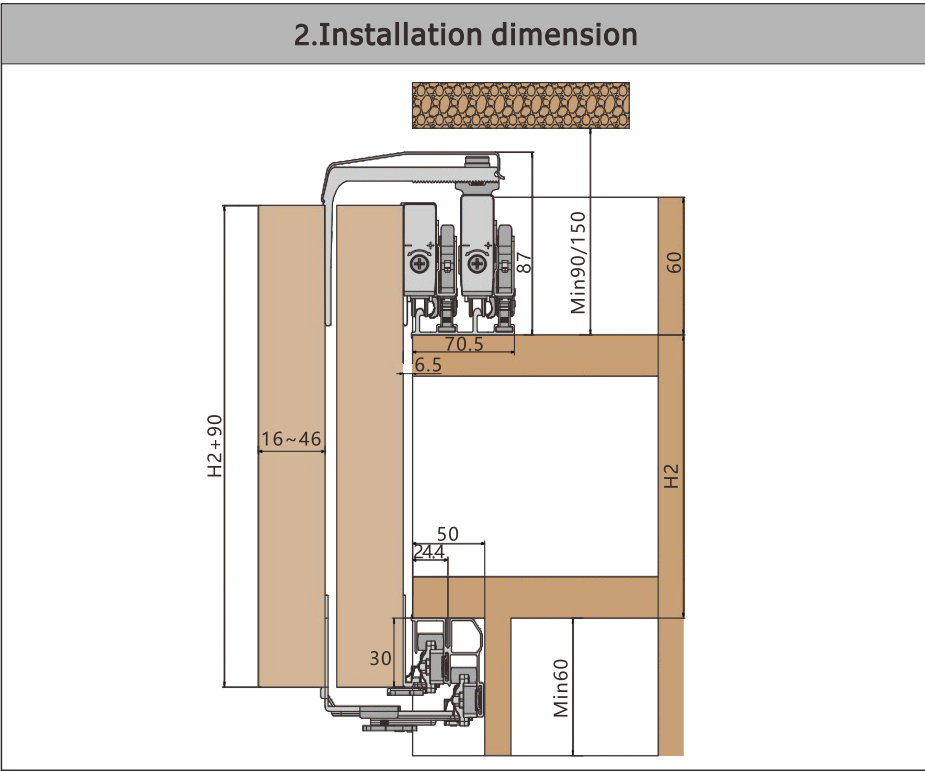
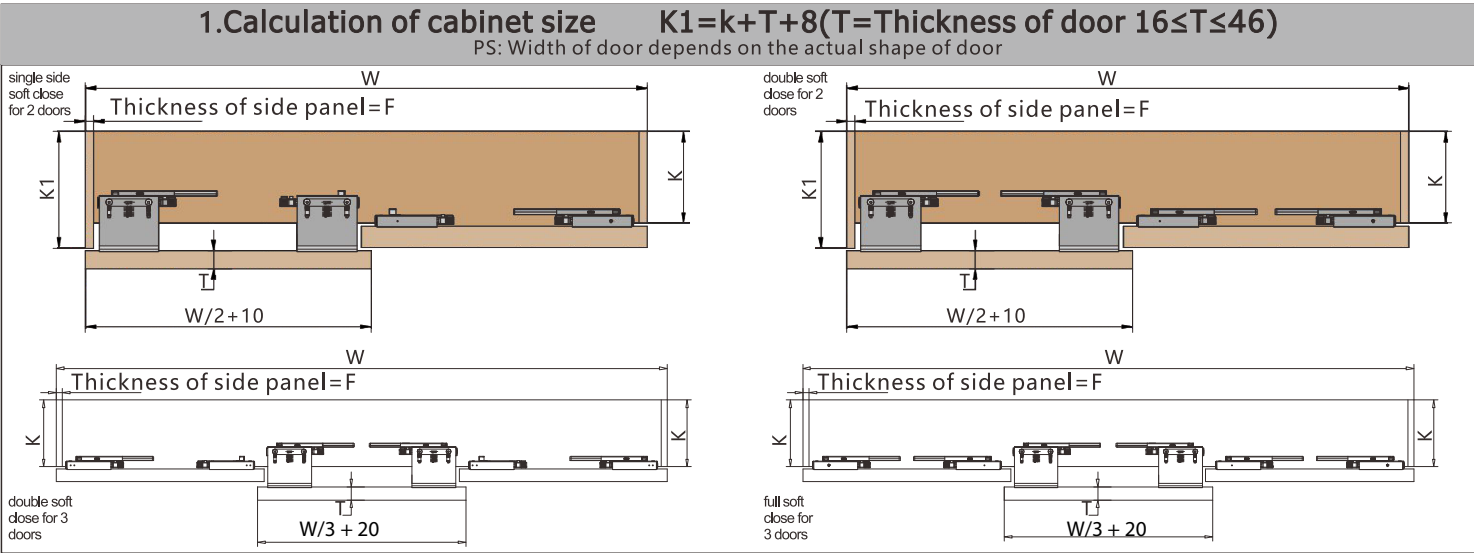


Double Soft Close System Installation Guide



Accessory	QTY				Accessory	QTY				Accessory	QTY			
	single side soft close for 2 doors	double soft close for 2 doors	double soft close for 3 doors	full soft close for 3 doors		single side soft close for 2 doors	double soft close for 2 doors	double soft close for 3 doors	full soft close for 3 doors		single side soft close for 2 doors	double soft close for 2 doors	double soft close for 3 doors	full soft close for 3 doors
Left Up Roller For Outside Door	1	1	1	1	Right Up Roller For Outside Door	1	1	1	1	Up Damper	2	4	4	6
Left Up Roller For Inside Door	1	1	2	2	Right Up Roller For Inside Door	1	1	2	2	Down Damper	2	4	4	4
Down Roller For Outside Door	2	2	2	2	Down Roller For Inside Door	2	2	4	4	Stopper	2	4	4	4
Stopper	1	1	2	2	Anti-collision stopper	0	0	0	1	St4x16 Cross Resessed Flat Head Tapping Screw	40	40	60	60



4.Drill size of door and fix the accessories

Min 25+F

Drill hole by position template

Thickness of side panel=F

Drill Fixed Point At Hole B, Install upper runner

Install Down Damper Min 100+F Without Down Damper Min F

Drill Fixed Point At Hole A, Install Down Runner

Lock the screw once damper installed properly in place

Pull the stopper at right place

Fix the down runner

4.1 Drill the hole with position plate;

4.2 Fix the upper runner damper and down runner;

5.Install the upper and down rail

5.1 install the upper damper stopper and fix the upper rail;

Install this fitting when you need full soft close for 3 doors

Pre-drill $\Phi 5$ hole on base plate

Fix the bottom track from surface of bottom panel

Fix the track from bottom

Bottom track fixing solution A

Bottom track fixing solution B

6.Installation of outer and inner door(Inner door first,Outer door second)

6.1 Hang the upper runner;

6.2 Lock the stopper;

6.3 Install the down runner;

Contrarotate the down runner paddle

Contrarotate the down runner paddle, thus runner can rise into the down rail

7.Height adjustment of doors and fix the upper damper stopper

7.1 Use cross screwdriver to adjust the door in line;

7.2 Push the door to the end, fix the stopper when finish the soft closing path;

Adjust height $\pm 3.5mm$

8.Fix the down damper

9.Install the stopper

10.Anti collision stopper installation(For 3 door)

10.1 loosen the screw then lock the screw after stretching the colision stopper;

10.2 Slide two inside door until two damper both hook the colision stopper;

10.3 Loosen the screw to adjust gap between two inside door, at last lock the screw;